

**Relentless Innovation**  
for your diagnostic confidence

**SAMSUNG**



**V7**

**Take what you want**



Product Inquiry

# All the key benefits you want

The V7, a powerful cardiovascular ultrasound system gives you the possibility to do what you want with comprehensive tools that feature the latest innovations. Rich in features, the V7 offers a fascinating performance to handle your needs of daily practices and allows you to explore to the fullest.



Overview video



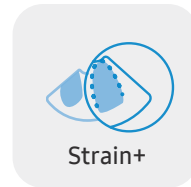
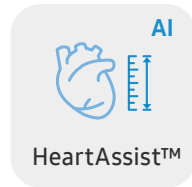
## Diagnose daily examinations with ease

The V7 is fully capable of covering a multitude of cardiovascular expert tools. Healthcare professionals can execute targeted examinations with ease, using the V7's intelligent system features.

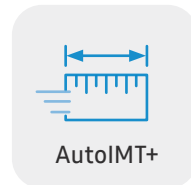
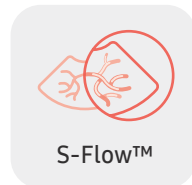
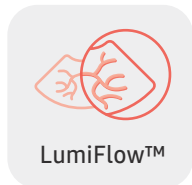
### 2D imaging



### Diagnostic features



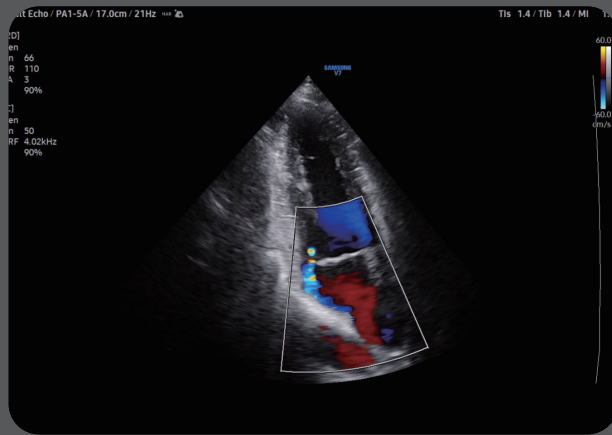
### Color imaging



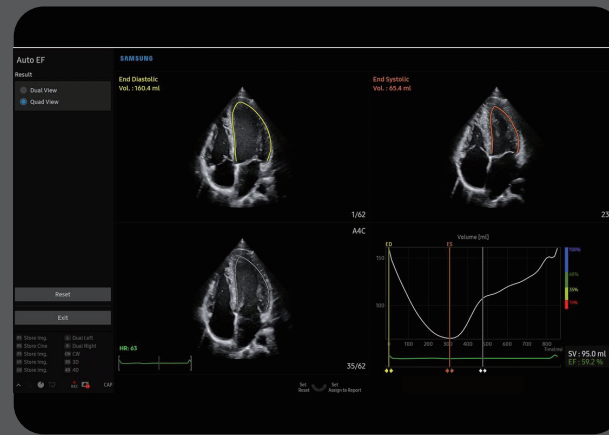
# Striking images for confidence



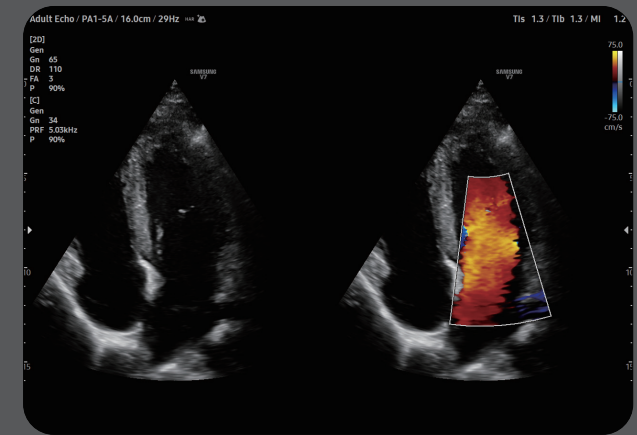
Image gallery



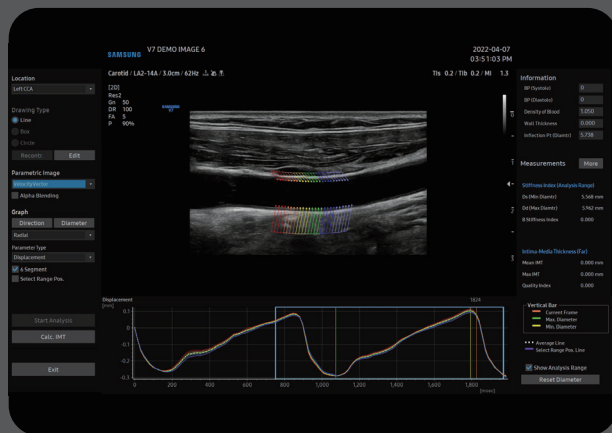
2 chamber view with color



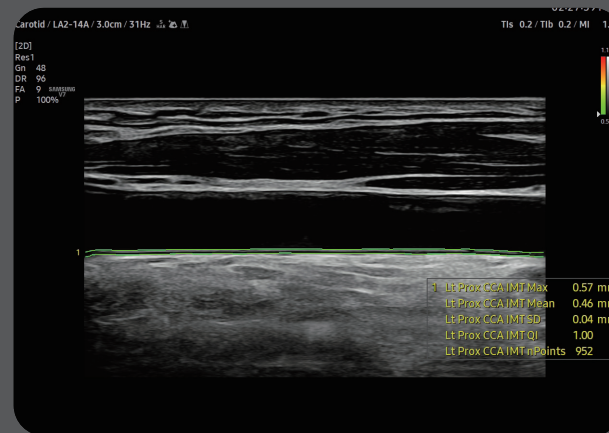
AutoEF



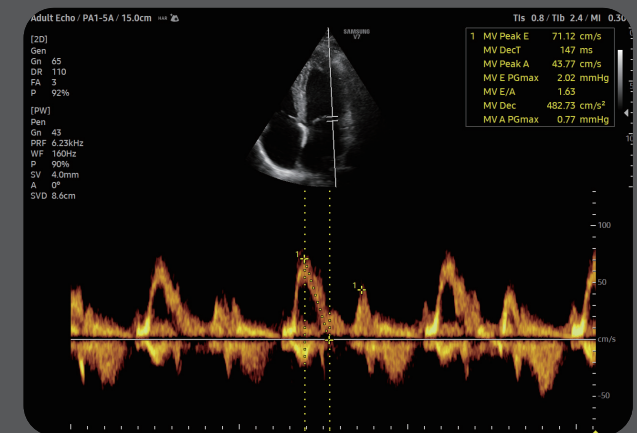
4 chamber view in DualLive



ArterialAnalysis™



AutoIMT+



HeartAssist™ PW mitral valve inflow

# Enriched diagnostic features with accuracy and precision

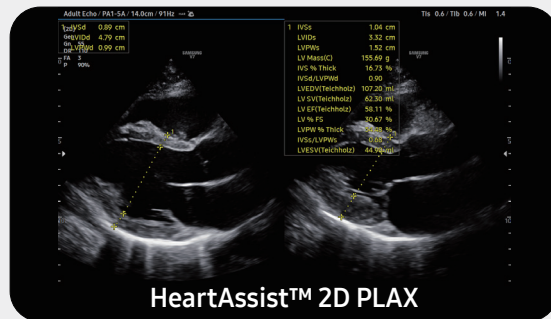
The V7 system comes with advanced tools and semi-automated features that assist in precise diagnosis and increasing throughput. The intelligent features create a simplified user interface and guide the users in significantly improving daily examination experiences.



Learn more

## Classify views for heart diagnosis with AI technology

**HeartAssist<sup>1</sup>**, while based on AI technology and through the measure button classifies views for heart diagnosis, selects measurement items, and provides results.

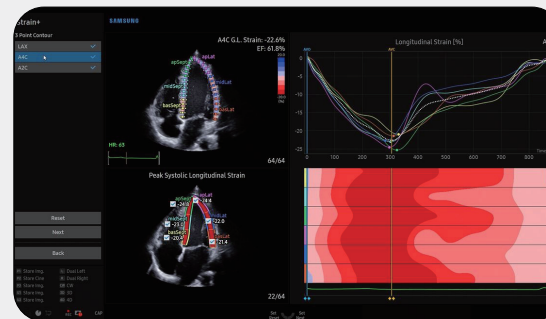


## Quantify wall motion of the left ventricle

**Strain+<sup>1</sup>** is a quantitative tool for measuring global and segmental wall motion of the left ventricle (LV). Three standard LV views and a Bull's Eye are displayed in a quad screen for easy assessment of the LV function.



White paper

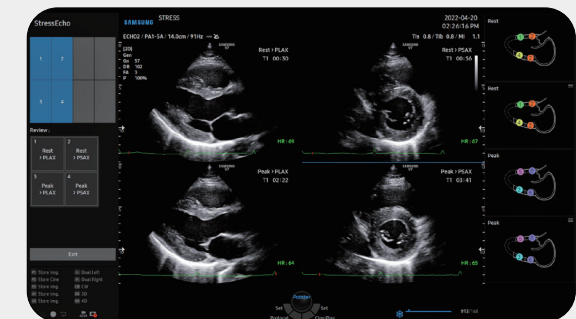


## Measure ejection fraction of the left ventricle

**AutoEF<sup>1</sup>** is a feature which conveniently measures and quantifies Ejection Fraction. The volume at the end-systolic and end-diastolic points of the left ventricle is calculated, to assist in quick and efficient assessment of the heart function.

## Score and report wall motion

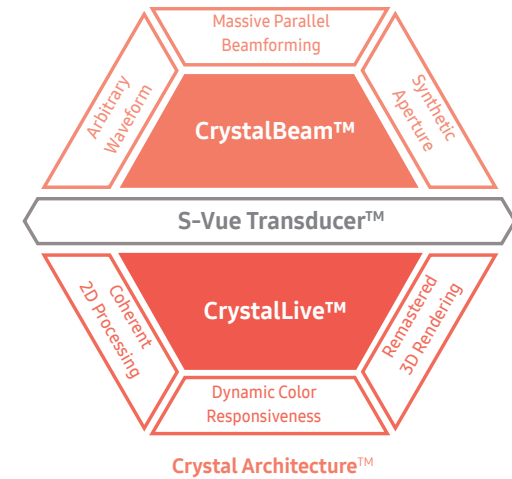
**StressEcho<sup>1</sup>** package includes wall motion scoring and reporting. It provides exercise StressEcho, pharmacologic StressEcho, diastolic StressEcho and programmable StressEcho.



Other features ArterialAnalysis™<sup>1</sup>, AutoIMT+

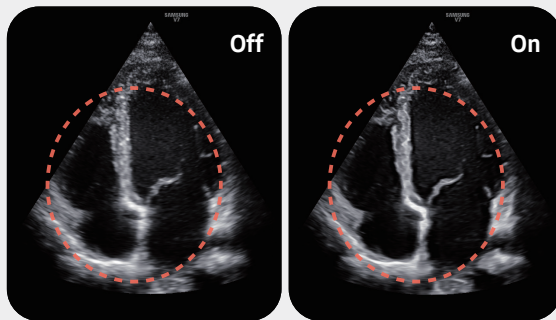
# Extraordinary image quality delivers diagnostic confidence

Gain insight into complex issues with exceptional image quality and resolution by Samsung's core imaging engine, Crystal Architecture™. The proprietary technology combines enhanced 2D image processing and detailed color signal processing to optimize and refine the image. The cutting-edge V7 will provide outstanding image clarity for a confident diagnosis.



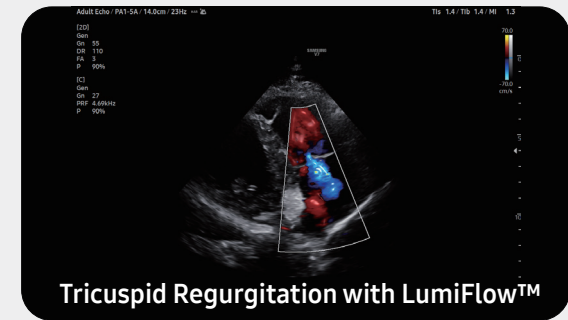
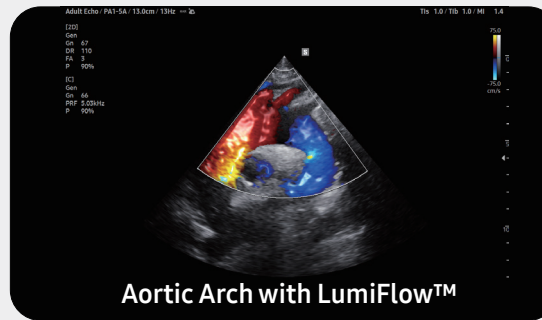
## Reduce noise to improve 2D image quality

**ClearVision** enhances the edge contrast and creates sharp 2D images for optimal diagnostic performance.



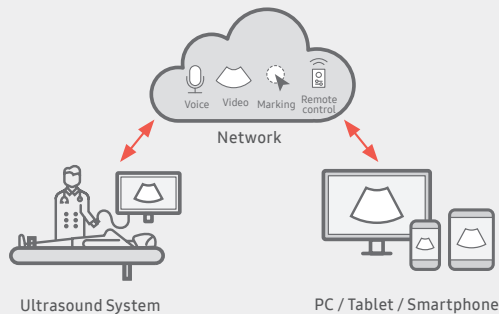
## Show blood flow in vessels in a 3D like display

**LumiFlow™** <sup>1</sup> is a function that visualizes blood flow in 3 dimensional-like to help understand the structure of blood flow and small vessels intuitively.



# Efficient workflow re-designed for simplicity

Made to maximize efficiency, allow V7 to streamline your workflow and reduce various tasks to just a few steps or keystrokes. The user experience is enhanced through how V7 displays scan data more easily and accurately. To ensure utility, the ergonomic design makes optimal use of the user's working environment. V7 is committed to enhancing healthcare professionals' workflow by providing intuitive optimization.

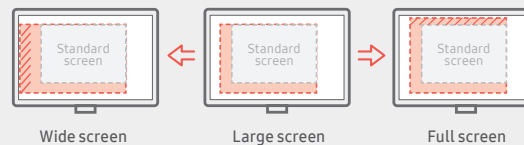


## Real-time image sharing, discussion, and remote control of ultrasound system

SonoSync™ 1,5 is a real-time ultrasound image sharing solution that allows voice communication and remote controllability for effective collaboration between physicians and sonographers at different locations.



Learn more

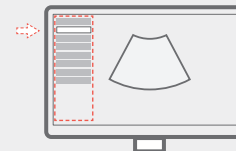


## See images in expanded view

The ultrasound examination can be performed while viewing the images and cines that are expanded at various ratios according to the user preference.

## Build predefined protocols to ensure every step is followed every time

EzExam+™ 1 ensures the full investigation is performed, eliminating the risk of forgetting an image or loop capture, as well as measurement and transducer preset changes.



## Customize frequently used functions on the touchscreen

TouchEdit, a customizable touchscreen, allows the user to move frequently used functions to the first page.



## Select transducer and preset combinations in one click

QuickPreset allows the user to select the most common transducer and preset combinations in one click.



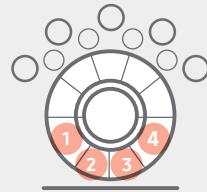
Access directly to RIS from the system

## Access to RIS from the browser of the ultrasound system

RIS Browser improves the workflow by allowing access to RIS through the embedded browser in the system. This allows for post processing without the need to move to a PC after scanning.

### Assign functions to the buttons near the trackball

The buttons around the trackball can be customized for easy selection of commonly used functions.



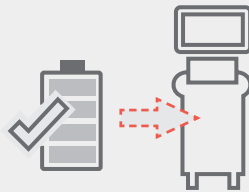
### Save image data directly to USB memory

User can directly export image/cine with a USB device.



### Continue working even when AC power is temporarily unavailable

BatteryAssist™ provides battery power to the system, enabling users to perform scans when AC power is temporarily unavailable. It also allows the system to be moved to another location without having to turn the power off and then back on.



### Samsung healthcare cybersecurity

To address the emerging need for cybersecurity, Samsung provides a solution to support our customers by offering the tools to protect against cyberthreats that may compromise invaluable patient data and ultimately degrade the quality of care.



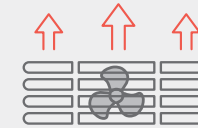
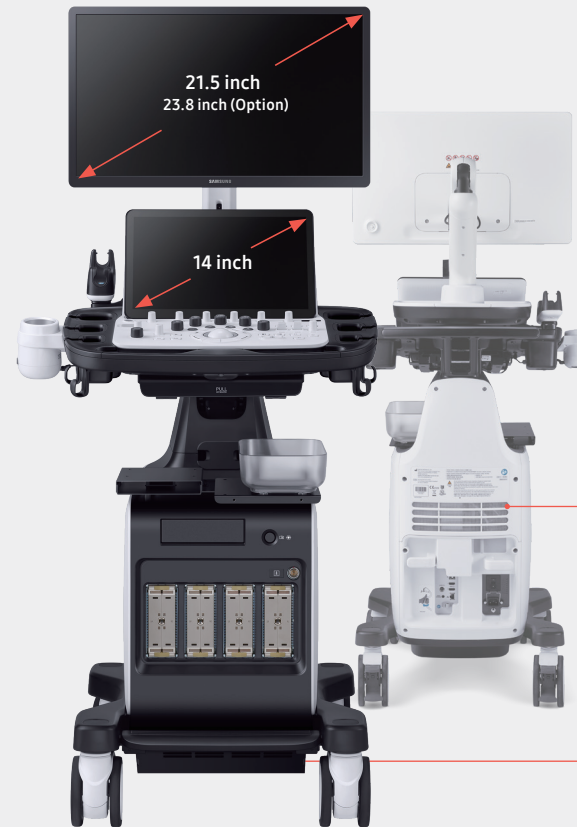
Intrusion prevention



Access control



Data protection



### Effective cooling system

An effective airflow system cools down the ultrasound system by constantly letting heat out and reducing fan noise.



### Eco-friendly resin cover

Eco-friendly resin is applied to the air vent exterior cover, outlining Samsung's efforts towards a greener tomorrow.

# Comprehensive selection of transducers

## Phased array transducers



**PA1-5A<sup>PE</sup>**  
Cardiac, Vascular, Abdomen, Pediatric, TCD, Thoracic



**PA3-8B**  
Cardiac, Pediatric, Abdomen, Vascular, TCD

## Curved array transducers



**CA4-10M**  
Abdomen, Pediatric, Vascular

## Linear array transducers



**LA2-14A**  
Small parts, Vascular, Abdomen, Pediatric, Thoracic, Musculoskeletal

## TEE transducer



**MMPT3-7**  
Cardiac

## CW transducers



**DP2B**  
Cardiac, Vascular, TCD



**CW6.0**  
Cardiac, Vascular

- \* This product, features, options, and transducers may not be commercially available in some countries.
- \* Sales and Shipments are effective only after the approval by the regulatory affairs. Please contact your local sales representative for further details.
- \* This product is a medical device, please read the user manual carefully before use.

1. Optional feature which may require additional purchase.
2. S-Vue Transducer™ is the name of Samsung's advanced transducer technology.
3. SonoSync™ is an image sharing solution.



Cleaning and disinfection guide



ECO Package is reusable packaging composed of eco-friendly recycled paper. It is Samsung's commitment to achieving carbon-neutral of the earth and environment.



Learn More



KOREA STAR AWARDS 2022

This award is for the contribution to the development of eco-friendly packaging in Korea. The ultrasound system V7 has won the KAPPE PRIZE of the Korea Star Awards.

## SAMSUNG MEDISON CO., LTD.

© 2022 Samsung Medison All Rights Reserved.  
Samsung Medison reserves the right to modify the design, packaging, specifications, and features shown herein, without prior notice or obligation.

